

# TESTING

## FIRE AND SMOKE TESTING

POLYCORE® SHUTTERS HAVE BEEN TESTED TO THESE STANDARDS

UL94-2006, "Tests for Flammability of Plastic Materials" (Vertical Burning Test, V-O, V-1 or V-2).  
*Classification:* The submitted sample is Classified V-0.

NFPA 701 Fire Test 1 (small) 2004 Edition "Standard Methods of Fire Tests for Flame-Resistant Textiles and Films".

*Test Results:* Pass.

Flammability in accordance with the procedures outlined in California Administrative Code, Title 19, Section 1237.1 Original Condition.

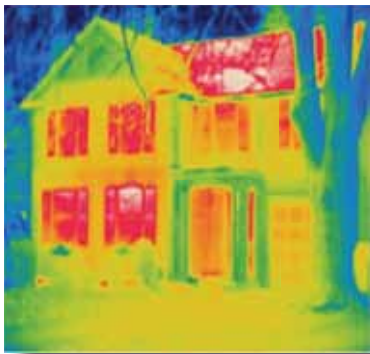
*Conclusion:* The submitted sample meets the flammability requirements.

The above tests were performed by QAI, a California State Fire Marshal certified testing lab. They are accredited by numerous government and private organizations. Accreditations are available on their web site at [www.qai.org](http://www.qai.org). California certification is available at the Office of the State Fire Marshal website at [www.osfm.fire.ca.gov/strucfireengineer/pdf/lab/approvedtestinglabs.pdf](http://www.osfm.fire.ca.gov/strucfireengineer/pdf/lab/approvedtestinglabs.pdf)

Polycore® shutters are a registered flame resistant product (F-59402) with the California Department of Forestry and Fire Protection Office of the State Fire Marshal.

## R-VALUES

R-Value testing was performed on Polycore® and Lexwood® Advantage shutters by Geoscience, LTD. They are accredited by numerous government and private organizations. Accreditations are available on their web site at [www.geoscienceltd.com](http://www.geoscienceltd.com). The test were performed using the Heat Meter Method (ASTM C-518).



Using a standard Premium Vinyl Low-E 366 Argon Double Glazed Stationary Casement Window, the Comparative Competitive R-Value for Polycore® is 4.44.

Using a standard Premium Vinyl Low-E 366 Argon Double Glazed Stationary Casement Window, the Comparative Competitive R-Value for Lexwood® is 4.5.

When calculating the R-value for a single pane window system under normal outside and inside ambient conditions, the R-value is about 1.0. When you add the closed Polycore® Shutter system R-value to the window, it almost doubles the window system R-value which reduces the heat flux by nearly a factor of two. This reduced heat flux is a significant energy saving of window heat losses or gains.

